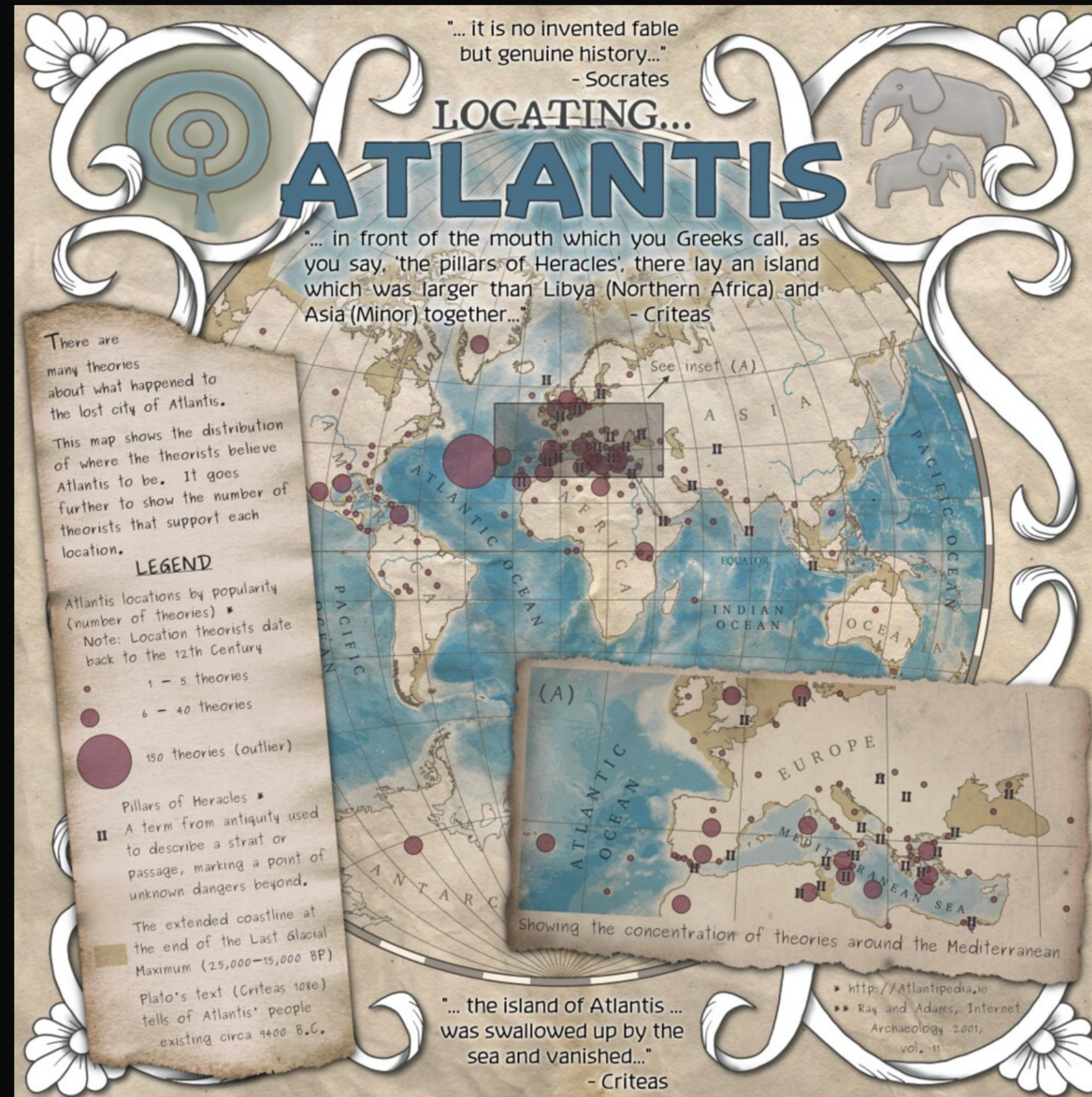


Cool QGIS Maps

Marco Bernasocchi - OPENGIS.ch



← Back to group

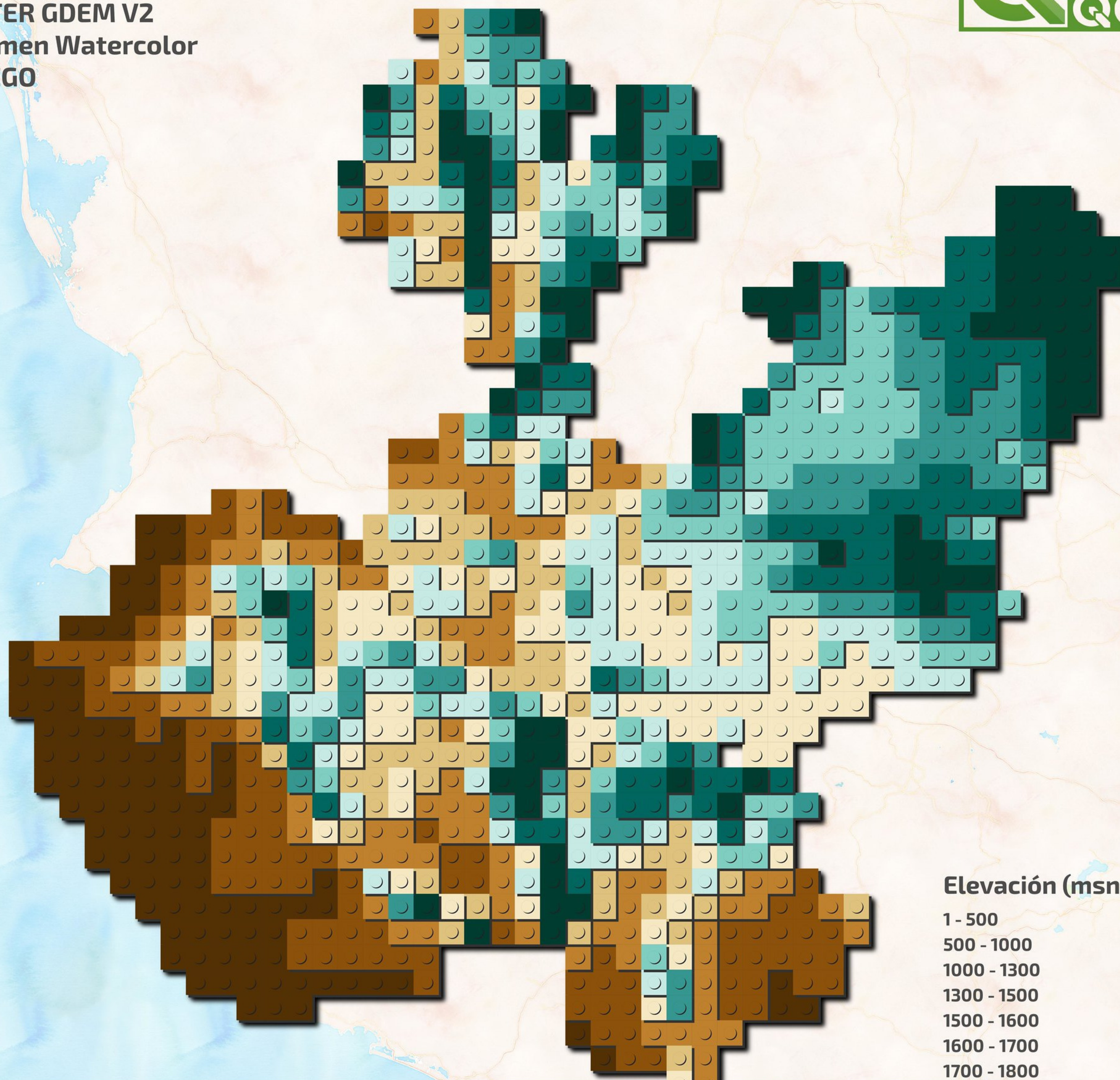


flickr.com/photos/59081698@N08/36366047445

Loaded on August 4, 2017

Some rights reserved

@hbecerraGIS
Octubre 2019
ASTER GDEM V2
Stamen Watercolor
QLEGO



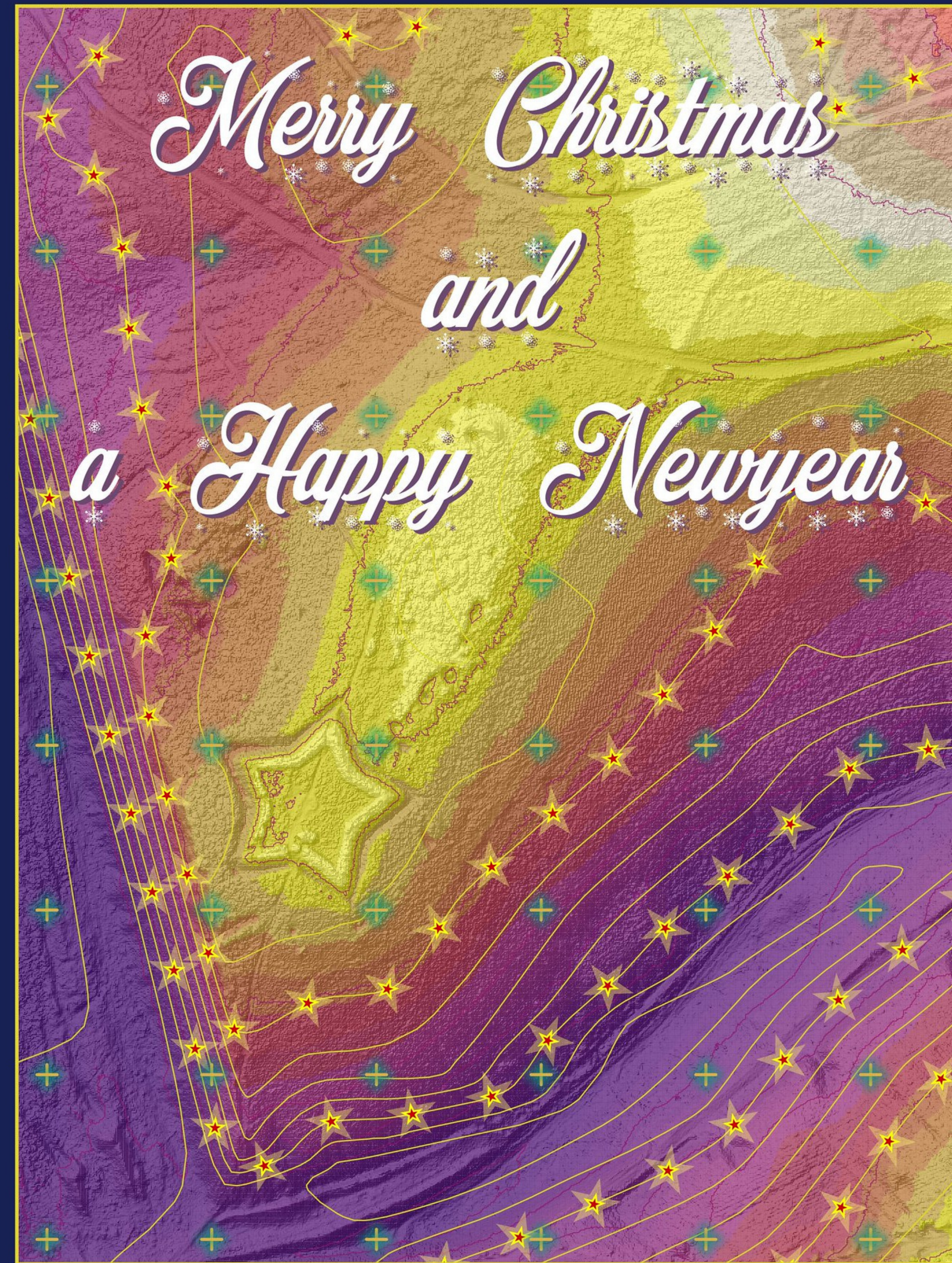
Elevación (msnmm)

- 1 - 500
- 500 - 1000
- 1000 - 1300
- 1300 - 1500
- 1500 - 1600
- 1600 - 1700
- 1700 - 1800
- 1900
- 2000
- 2848



[flickr.com/photos/146056015@N08/49396650122](https://www.flickr.com/photos/146056015@N08/49396650122)

← Back to group



[flickr.com/photos/7361002@N08/50720455296](https://www.flickr.com/photos/7361002@N08/50720455296)

QGIS Christn

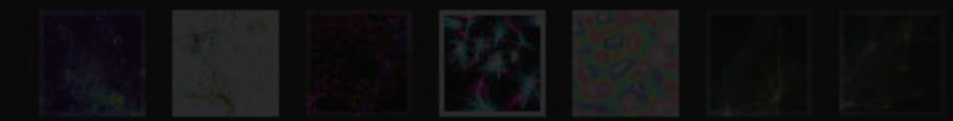
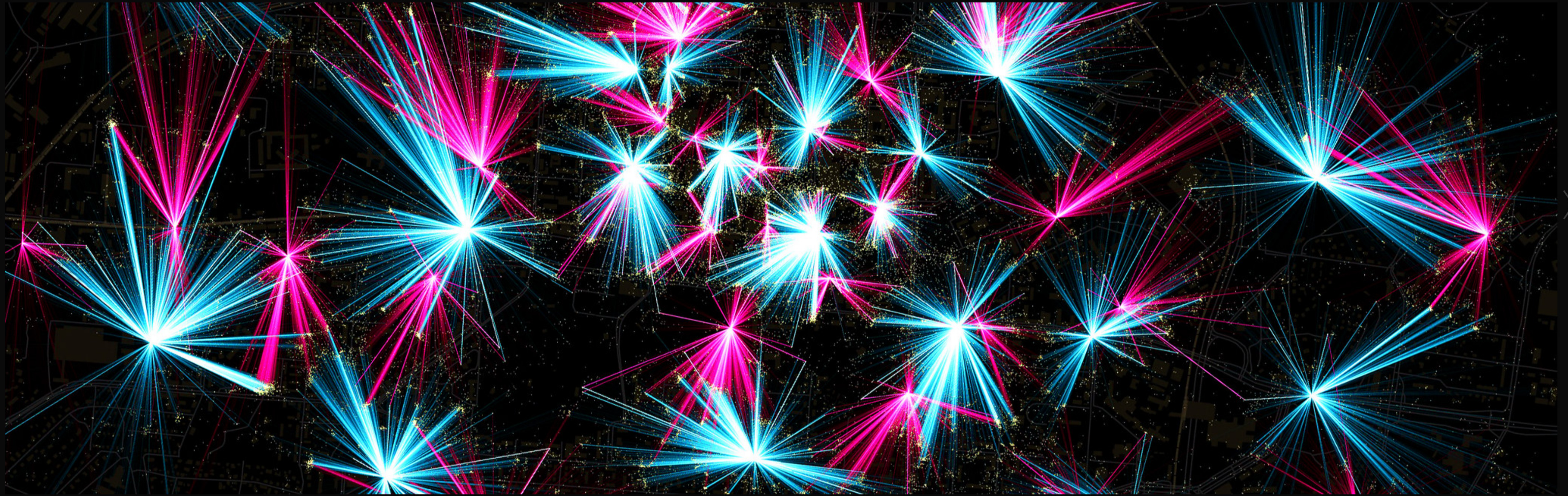
Going full out with Qgis!
Psychedelic colours! Triple star line style! On the fly contour lines!

Made in the Covidyear 2020 by Harry Bronkhorst with QGIS 3.16

on December 14, 2020

Some rights reserved





[flickr.com/photos/damianocerrone/35006591245/](https://www.flickr.com/photos/damianocerrone/35006591245/)

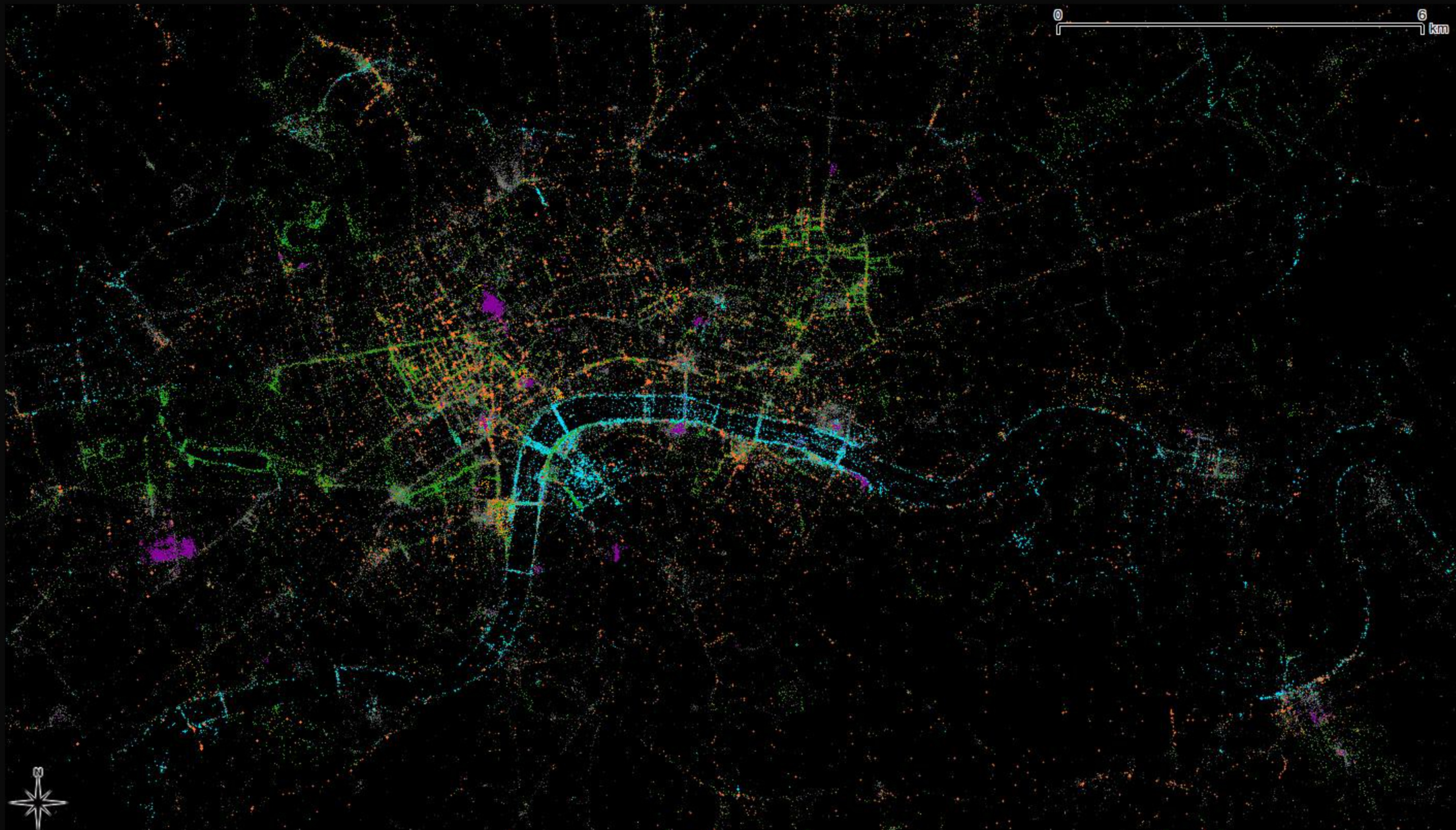
loaded on May 31, 2017

All rights reserved

Activity clusters in Rotterdam

www.spinunit.eu - [facebook.com/spinunit/](https://www.facebook.com/spinunit/)

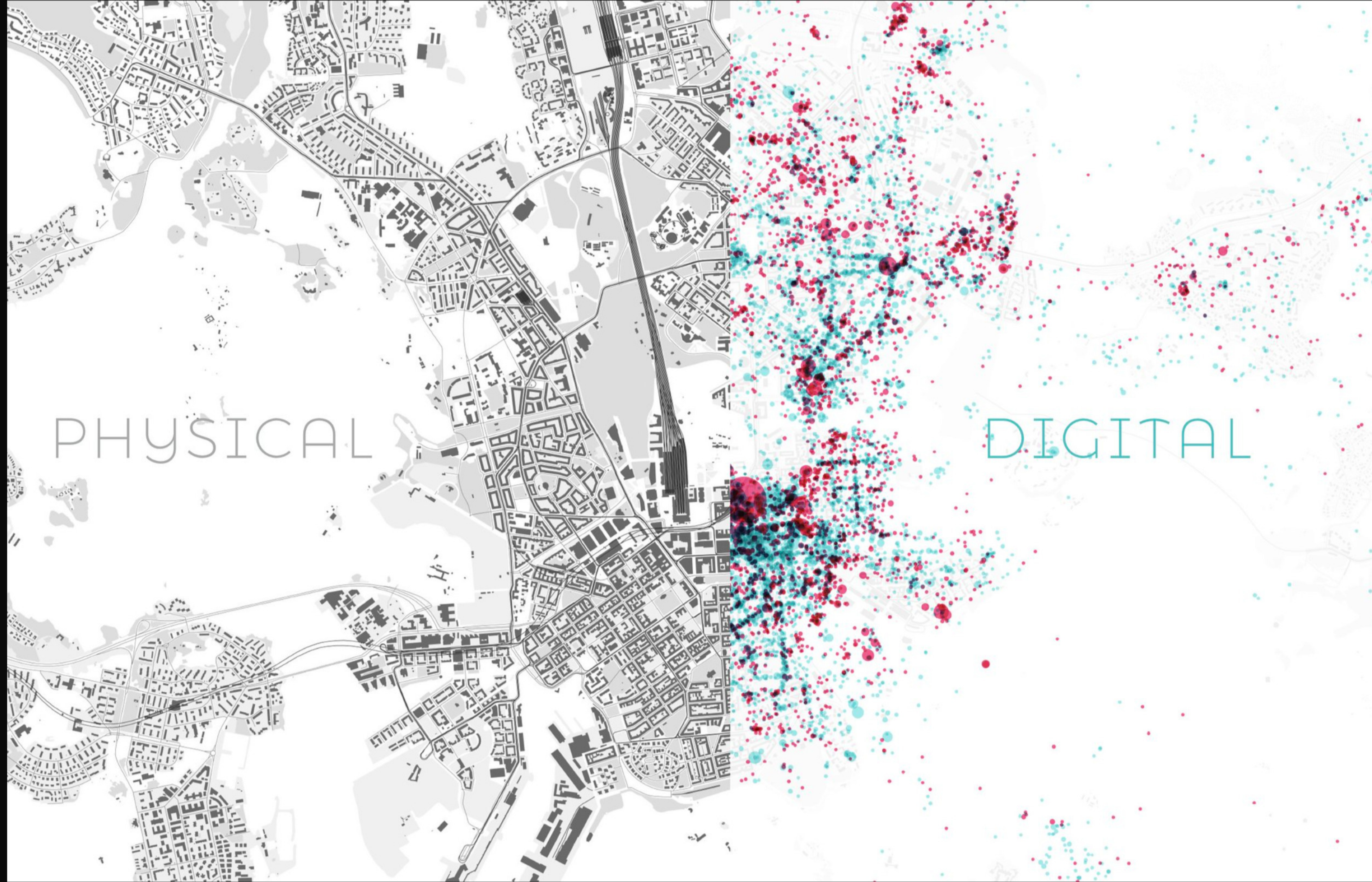
← Back to group

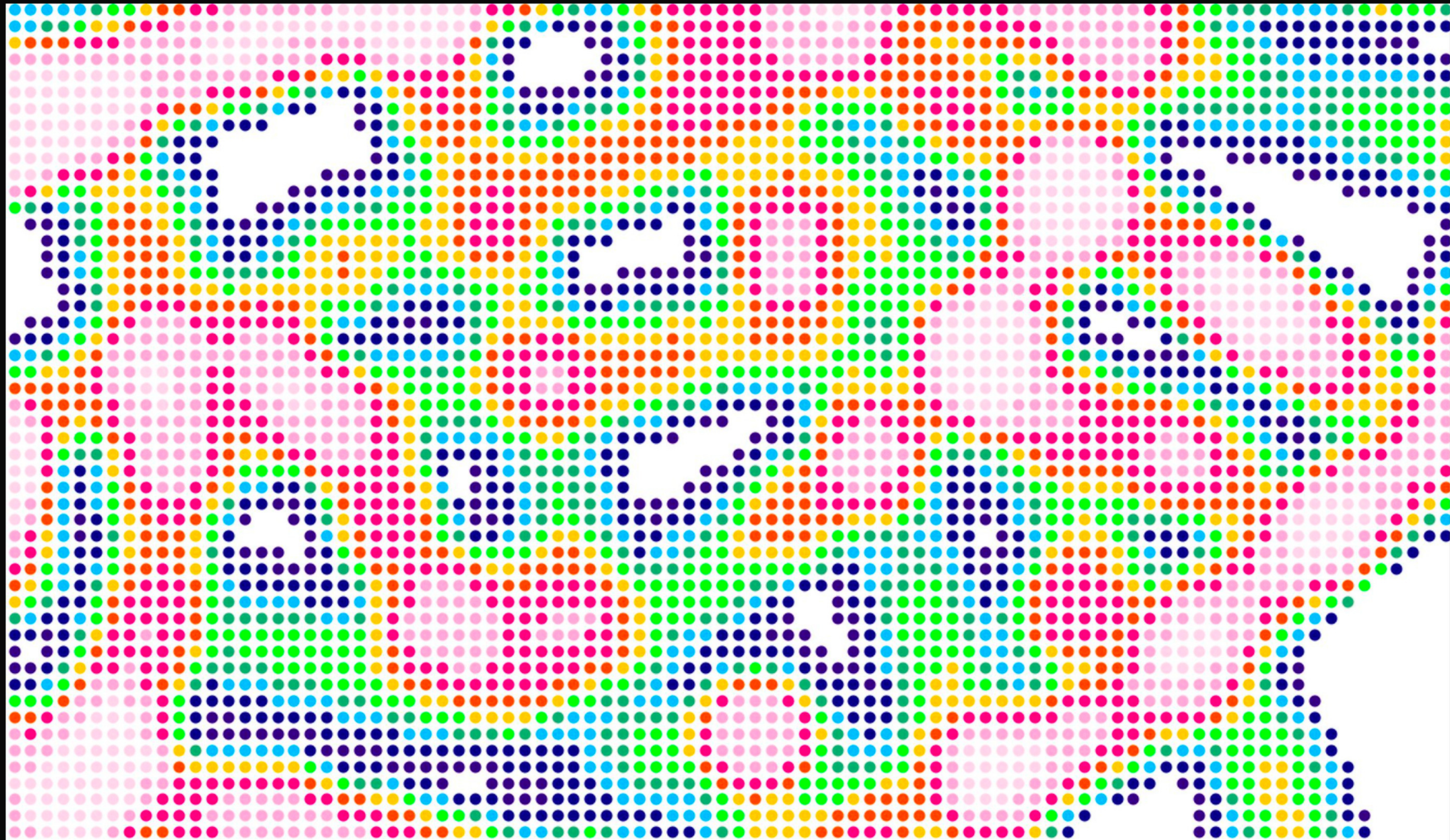


[flickr.com/photos/cvr70/5052588841](https://www.flickr.com/photos/cvr70/5052588841)

October 5, 2010

reserved





[flickr.com/photos/damianocerrone/34195659753/](https://www.flickr.com/photos/damianocerrone/34195659753/)

loaded on May 31, 2017

All rights reserved

Instagram density map - zoom_in

www.spinunit.eu - facebook.com/spinunit/



[flickr.com/photos/damianocerrone/35006590775/](https://www.flickr.com/photos/damianocerrone/35006590775/)

loaded on May 31, 2017

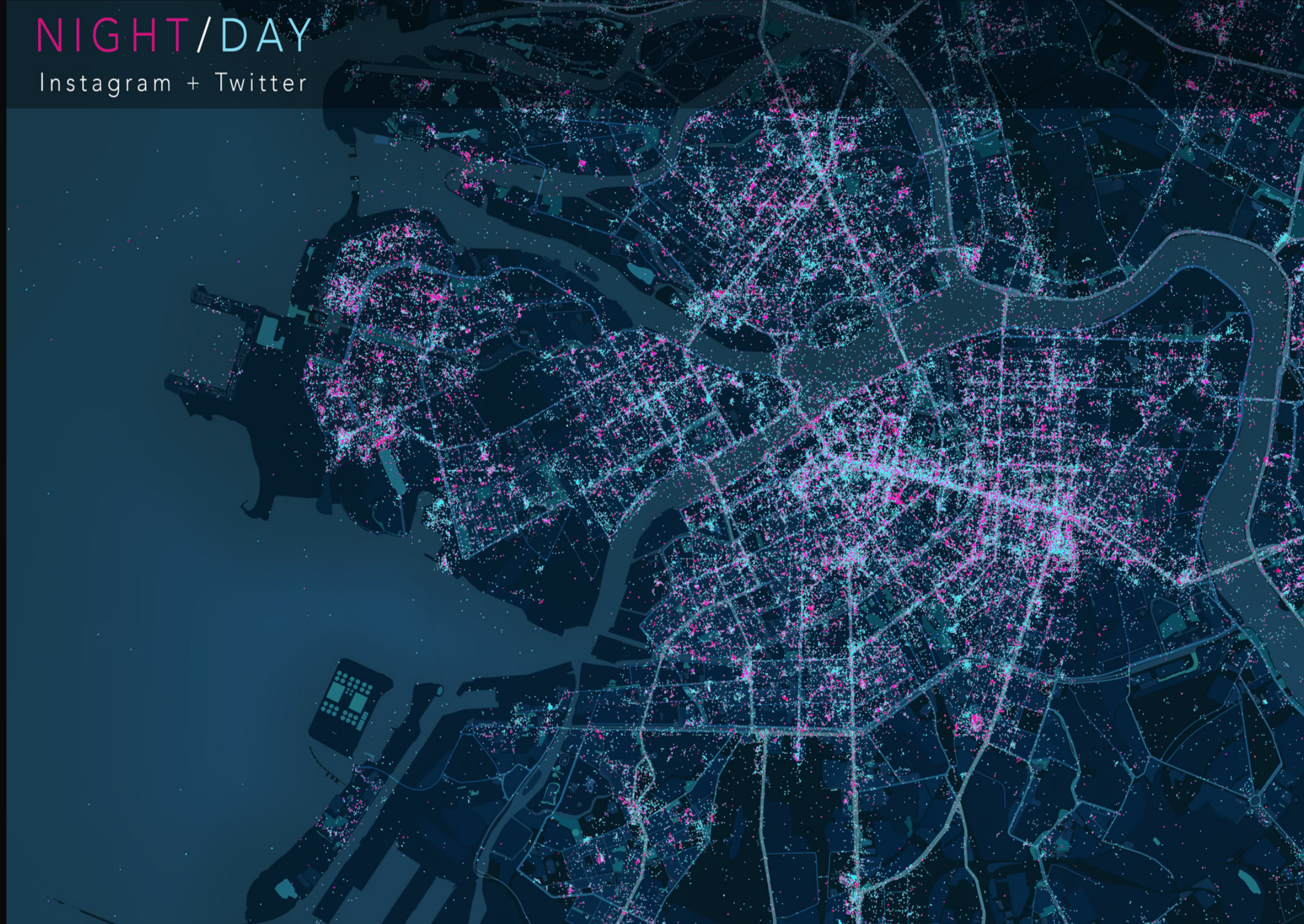
All rights reserved

Mobility patterns - Twitter data

www.spinunit.eu - facebook.com/spinunit/

NIGHT/DAY

Instagram + Twitter



[flickr.com/photos/damianocerrone/35006592745/](https://www.flickr.com/photos/damianocerrone/35006592745/)

loaded on May 31, 2017

All rights reserved

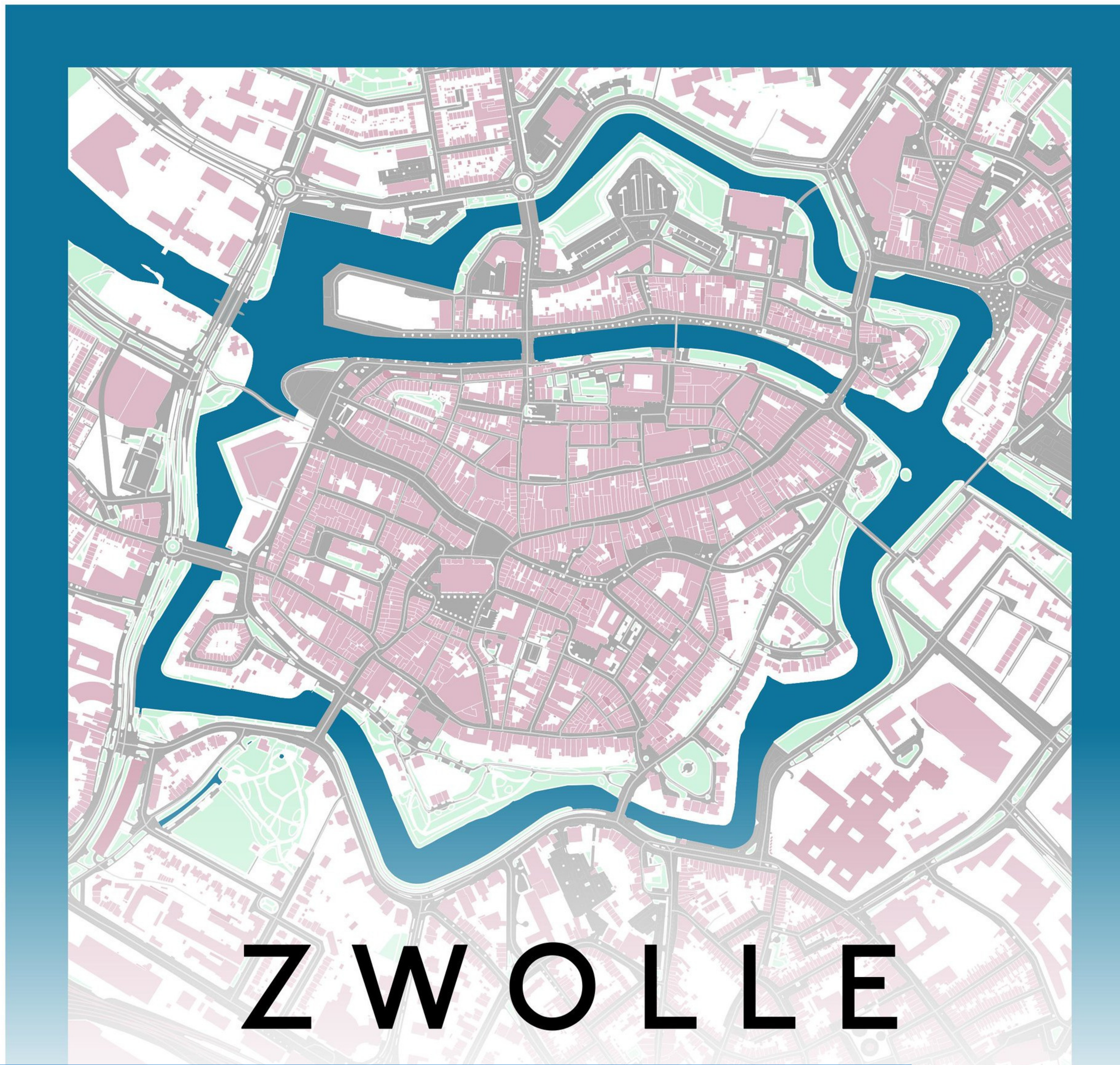
Social media mapping

www.spinunit.eu - facebook.com/spinunit/

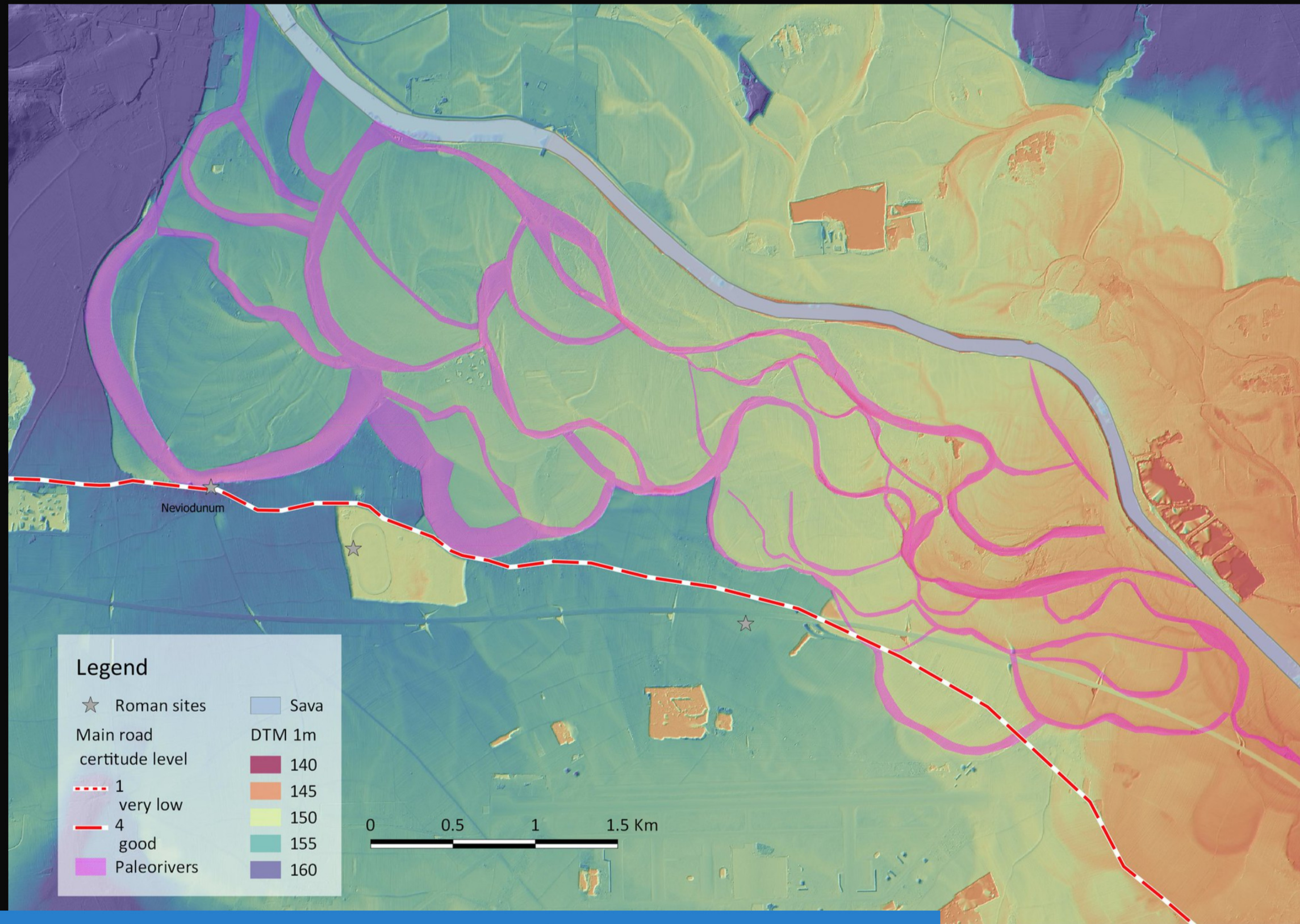


[flickr.com/photos/7361002@N08/38164818002](https://www.flickr.com/photos/7361002@N08/38164818002)

The fortified city of Naarden near Amsterdam.



[flickr.com/photos/7361002@N08/37329367716](https://www.flickr.com/photos/7361002@N08/37329367716)



flickr.com/photos/sarapellegrina/26920883719

Uploaded on November 28, 2017

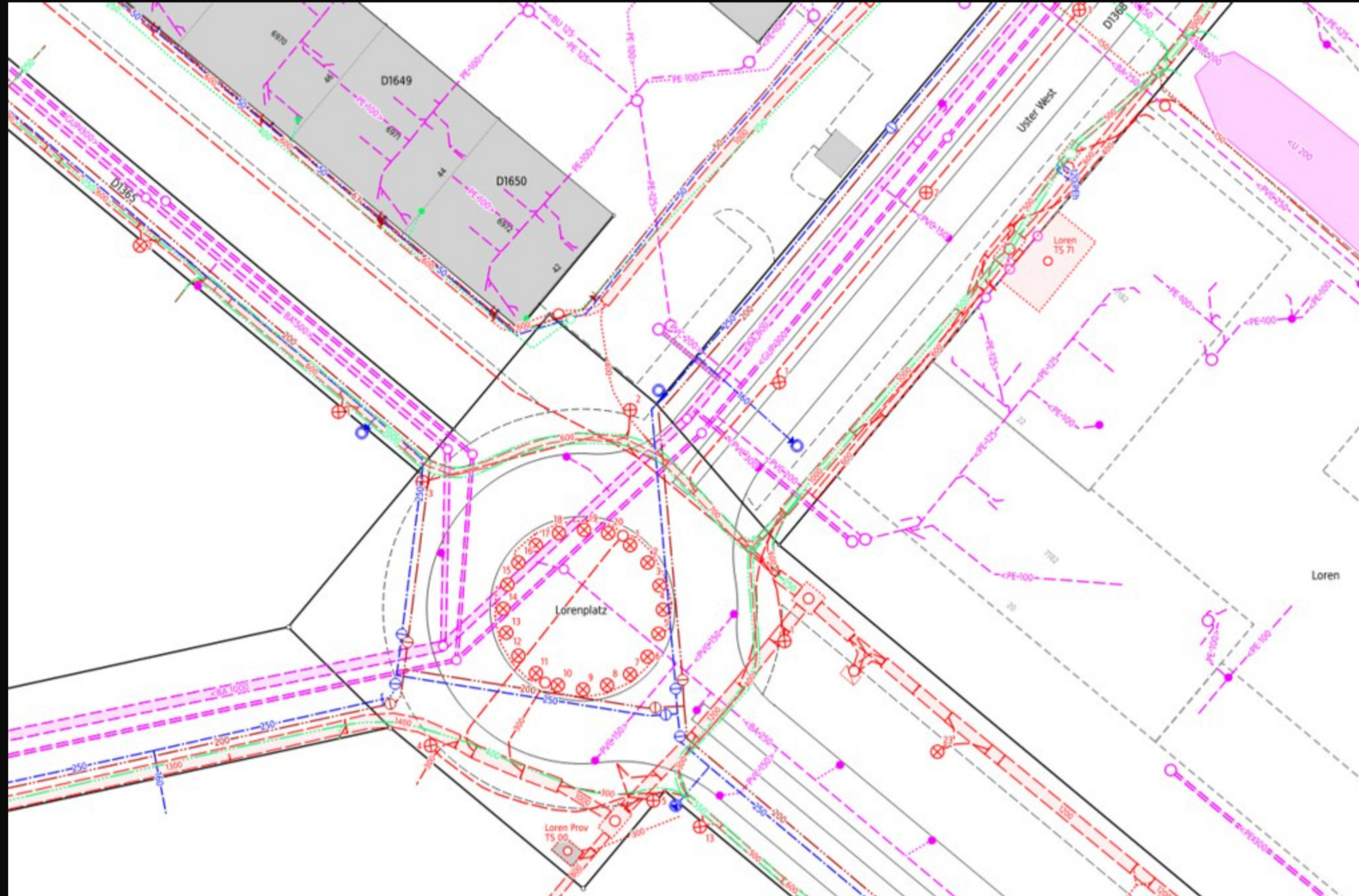
views faves comments

Some rights reserved



Changes of the Sava's riverbed and Roman main road at Neviodunum

Changes of the Sava riverbed and the Roman main road at



[flickr.com/photos/96959416@N07/8948354772](https://www.flickr.com/photos/96959416@N07/8948354772)



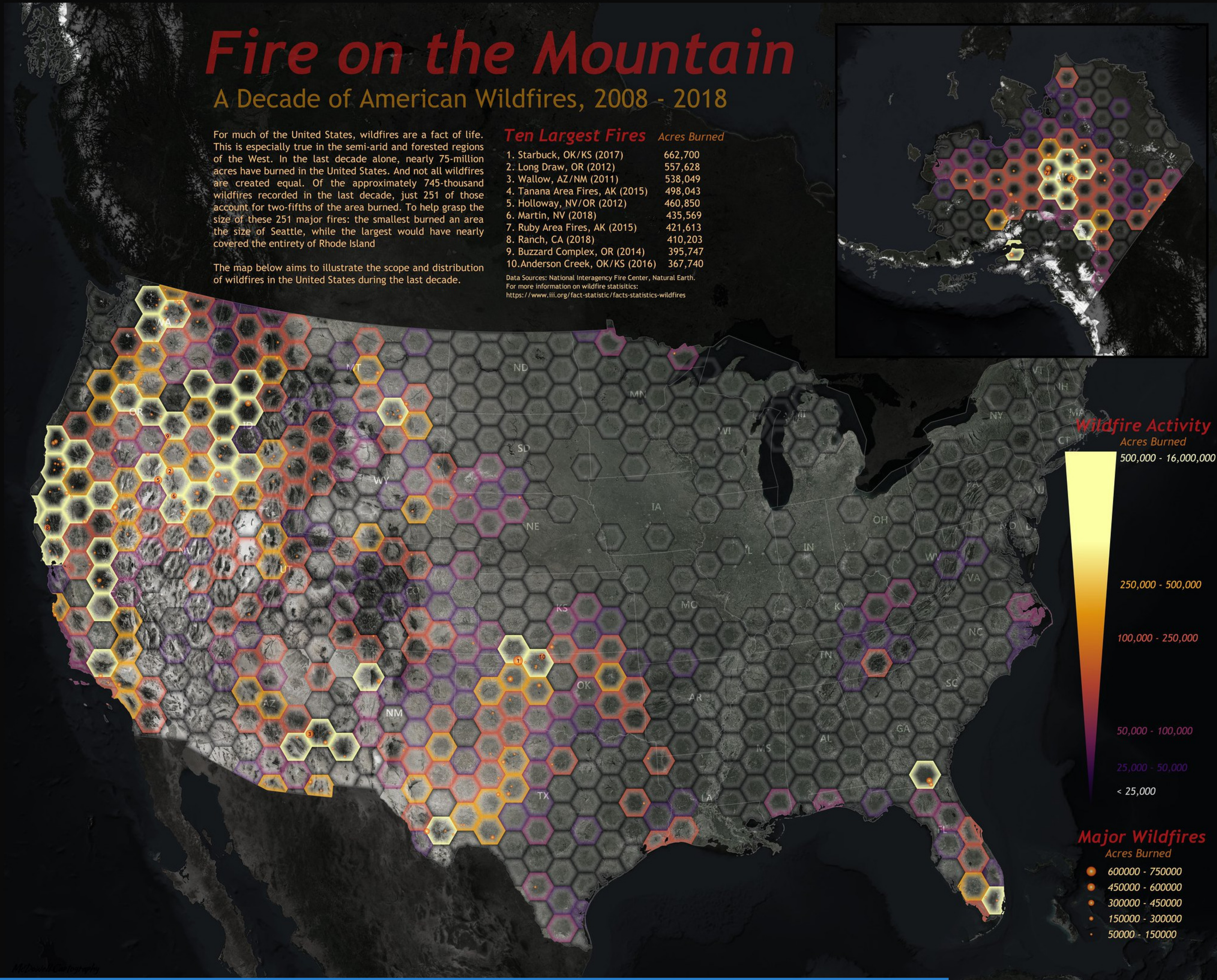
underground cadastre

The underground cadastre of the City of Uster features supply and waste-water pipes; gaz, water, electricity, communication, heating

Taken on June 4, 2013

© All rights reserved





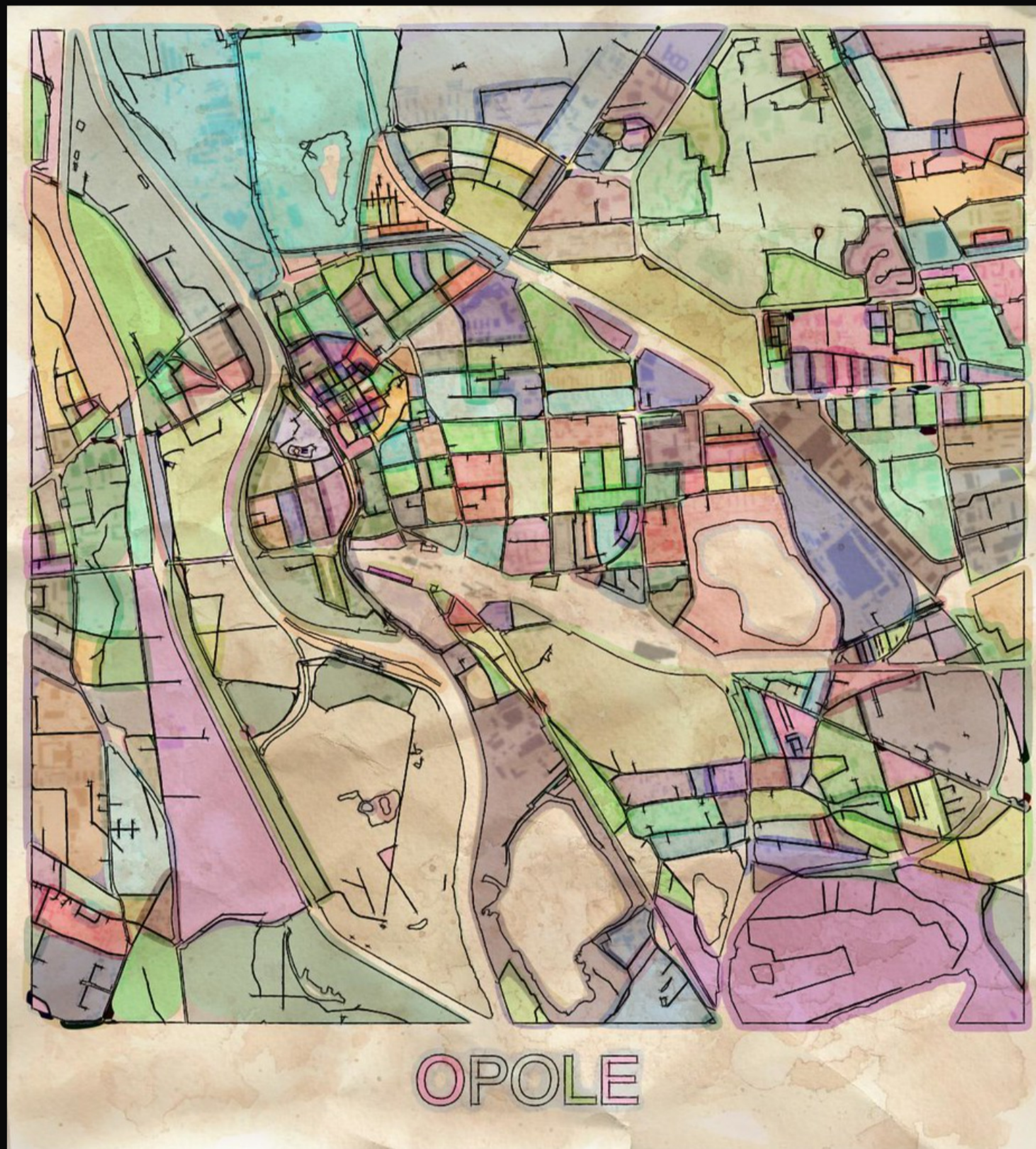
flickr.com/photos/taylormcdowell/39959475703

United States Wildfires, 2008-2018

I've always been amazed/fascinated/terrified by wildfire regimes in North America. The scope and magnitude of these seasonal fires

Uploaded on January 30, 2019

All rights reserved



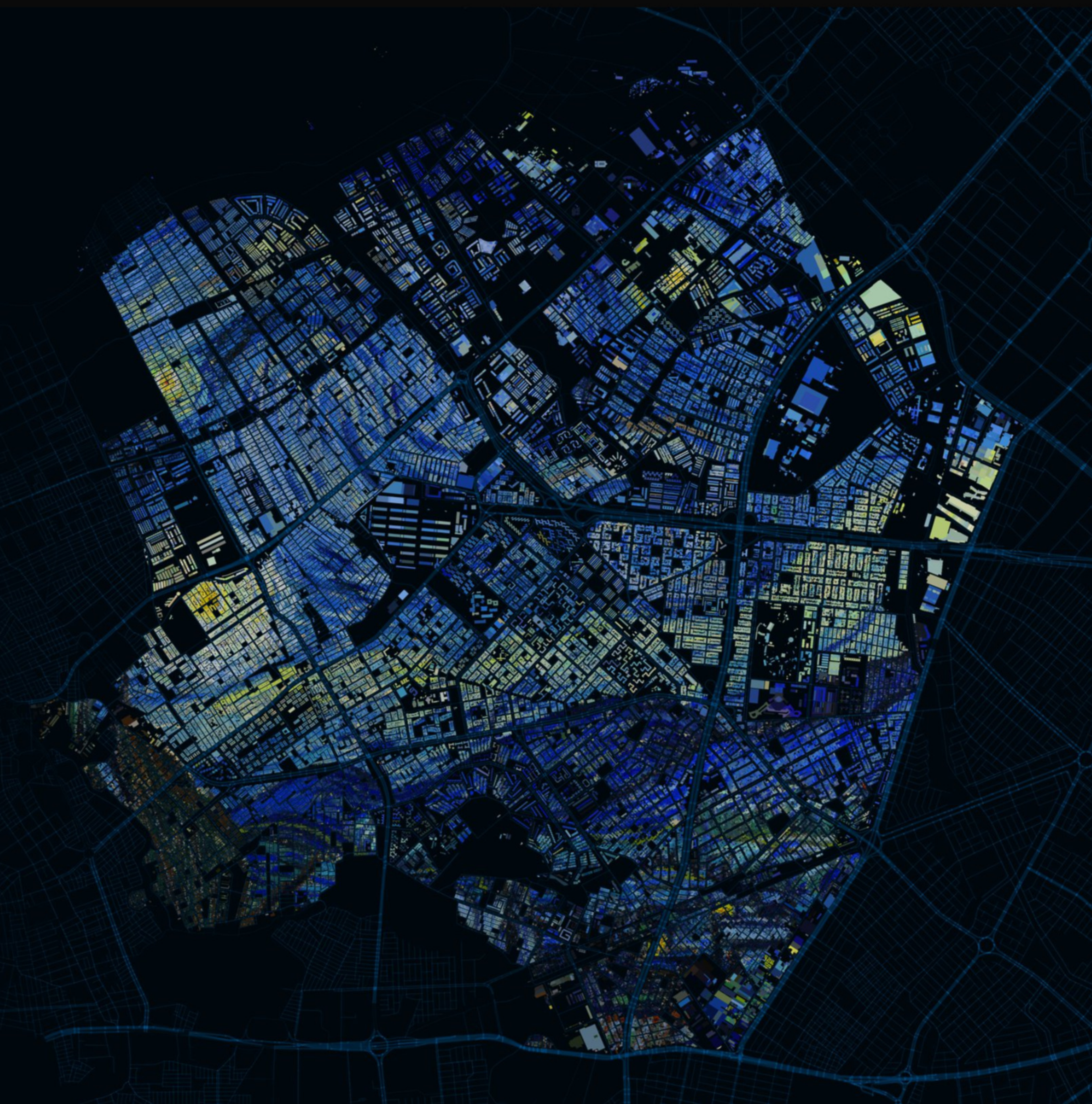
Serie
Bogotá una pintura
Localidad de
Kennedy

La noche Estrellada
(Vincent Van Gogh)



Los lugares aquí mencionados hacen parte de la ciudad de Bogotá (Colombia). Los datos espaciales fueron proporcionados por "Datos abiertos Bogotá" y pueden ser consultados en su sitio web.

Andrés Felipe Lancheros Sánchez
www.aflanc.wordpress.com
Twitter: @MiniTigri
Facebook: Tigrillo Cartográfico
Qgis v 3.14



Serie
Bogotá una pintura
Localidad de
Kennedy

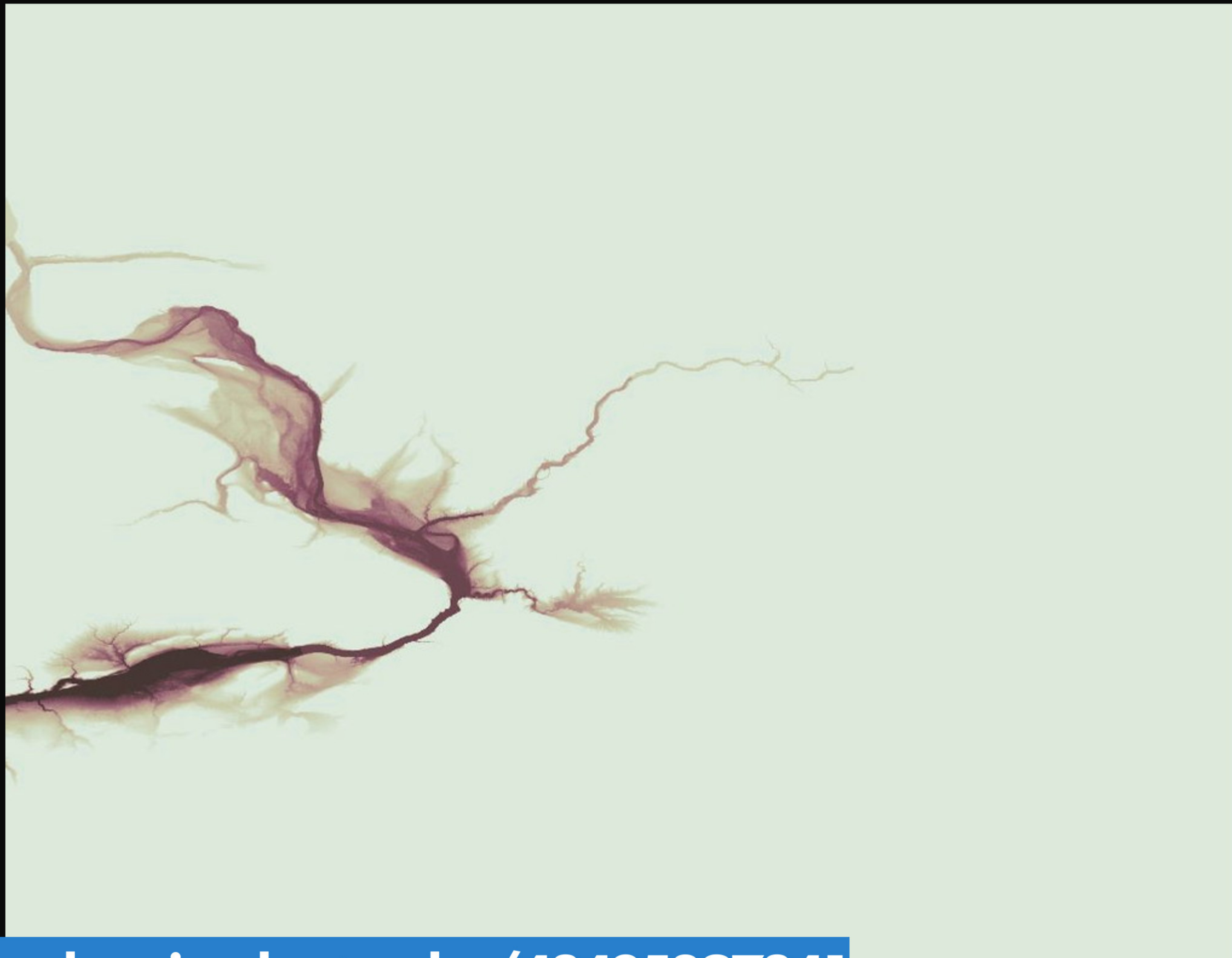
La noche Estrellada
(Vincent Van Gogh)



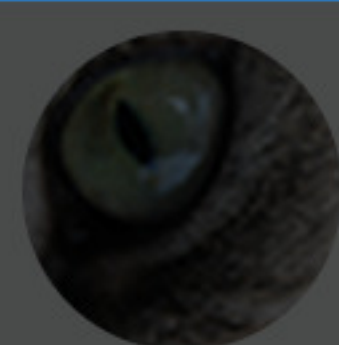
Los lugares aquí mencionados hacen parte de la ciudad de Bogotá (Colombia). Los datos espaciales fueron proporcionados por "Datos abiertos Bogotá" y pueden ser consultados en su sitio web.

Andrés Felipe Lancheros Sánchez
www.aflanc.wordpress.com
Twitter: @MiniTigri
Facebook: Tigrillo Cartográfico
Qgis v 3.14





[flickr.com/photos/overtcuriousbystander/48425397841](https://www.flickr.com/photos/overtcuriousbystander/48425397841)



Mark [+ Follow](#)

SE Washington / W Idaho

PRO

QGIS elevation masking.

25,944 views

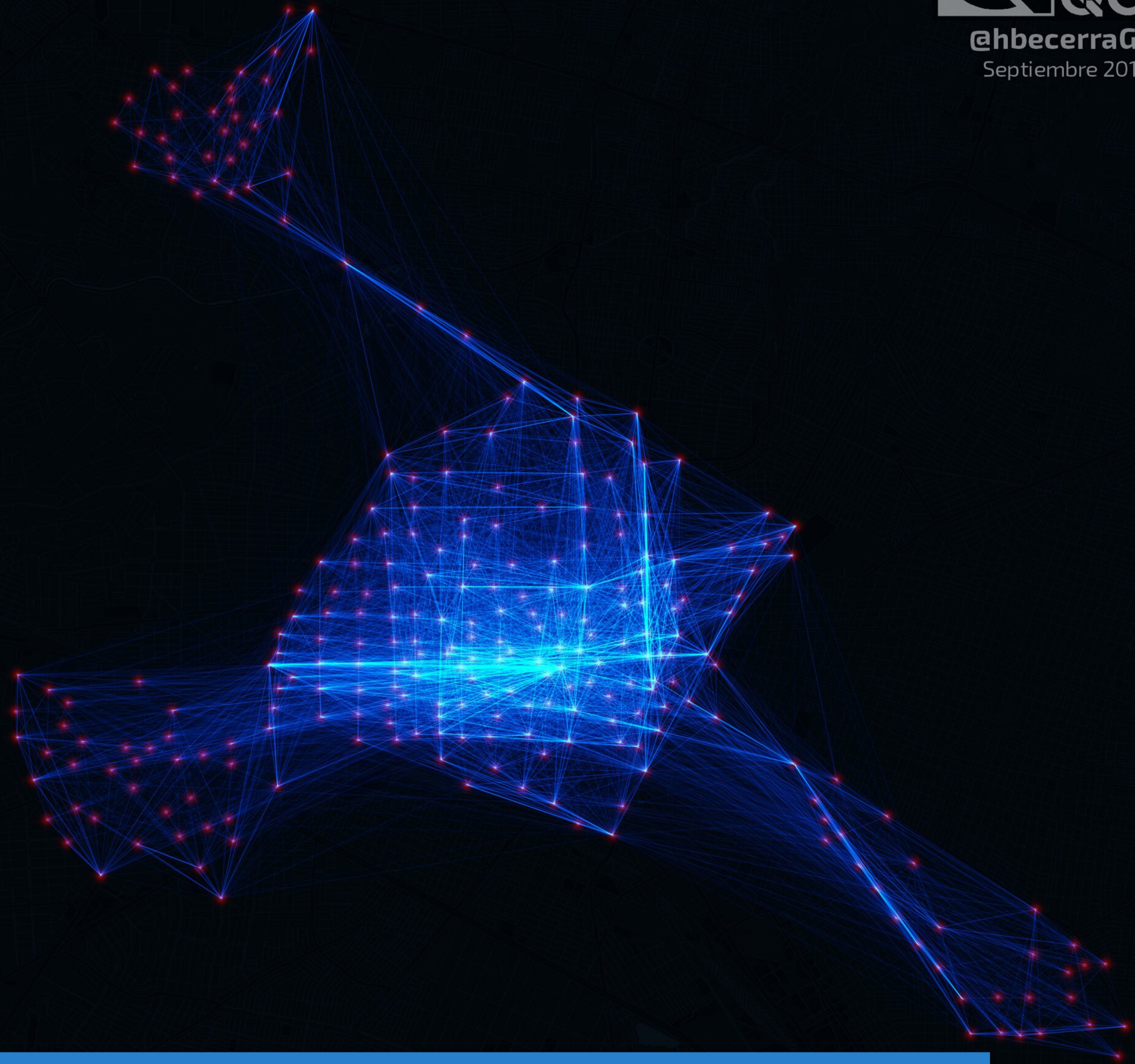
6 faves

2 comments

Taken on July 28, 2019

All rights reserved

made with QGIS
@hbecerraGIS
Septiembre 2019



← Back to group



[flickr.com/photos/146056015@N08/48678635688](https://www.flickr.com/photos/146056015@N08/48678635688)

Number of trips of the public bicycle rental system in the metropolitan area of Guadalajara

Where and how well did they shoot?

UAAP Season 81

*PPA - Points Per Attempt

fb.com/bnhr.xyz
twitter.com/BNHRdotXYZ

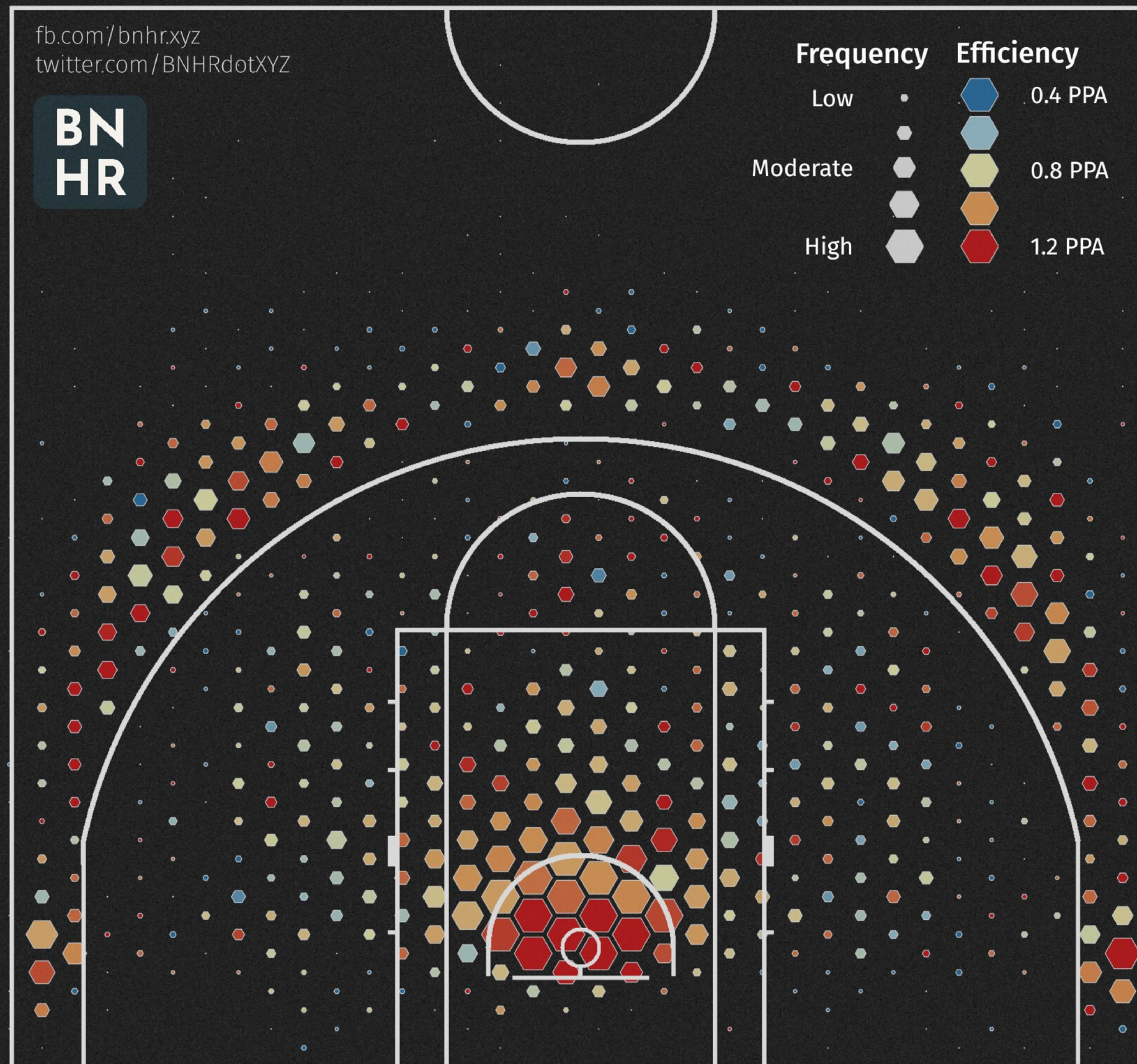
**BN
HR**

Frequency Efficiency

Low 0.4 PPA

Moderate 0.8 PPA

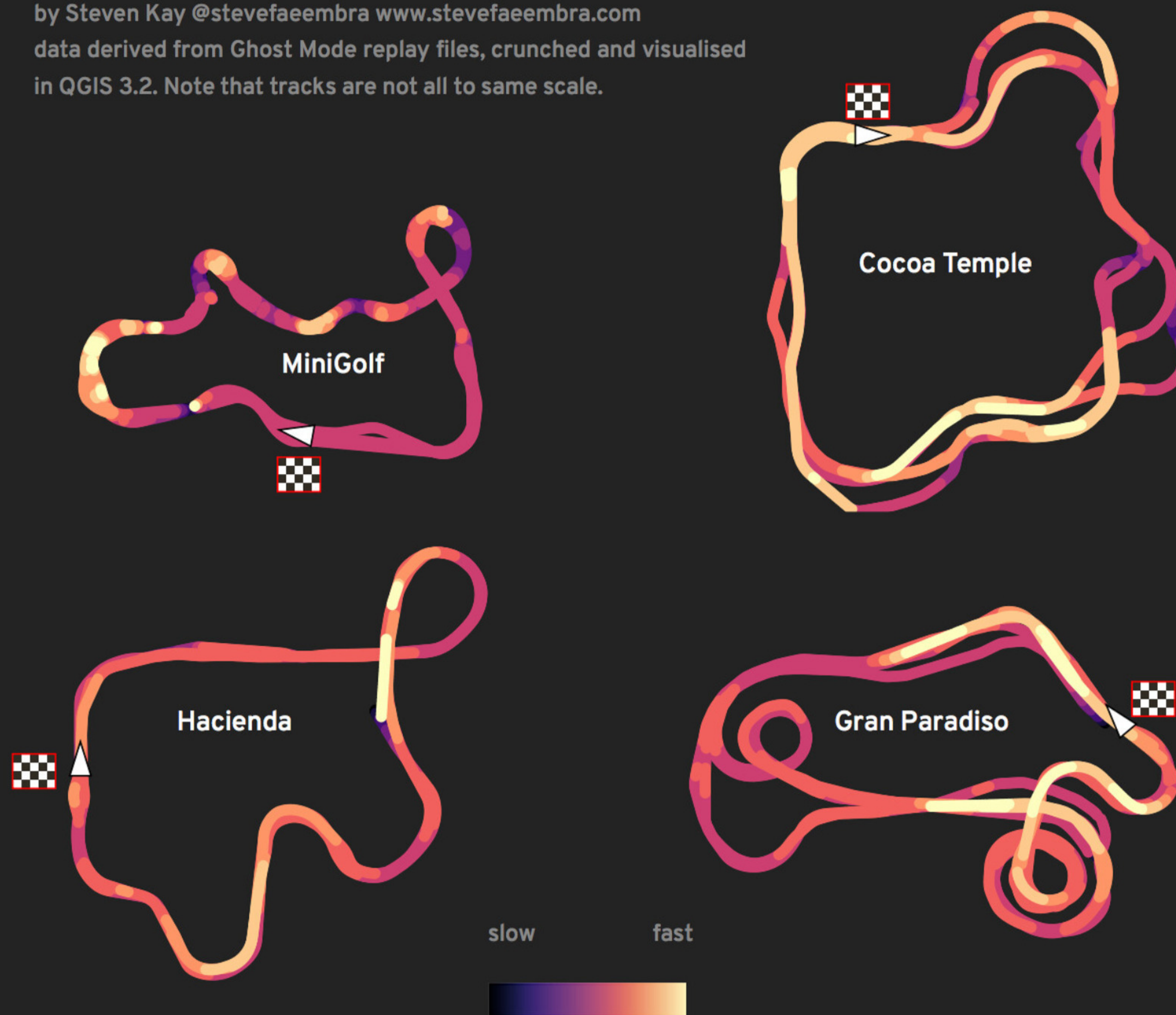
High 1.2 PPA



[flickr.com/photos/191712249@N02/50821520511](https://www.flickr.com/photos/191712249@N02/50821520511)

SuperTuxKart track speed profiles

by Steven Kay @stevefaeembra www.stevefaeembra.com
data derived from Ghost Mode replay files, crunched and visualised in QGIS 3.2. Note that tracks are not all to same scale.



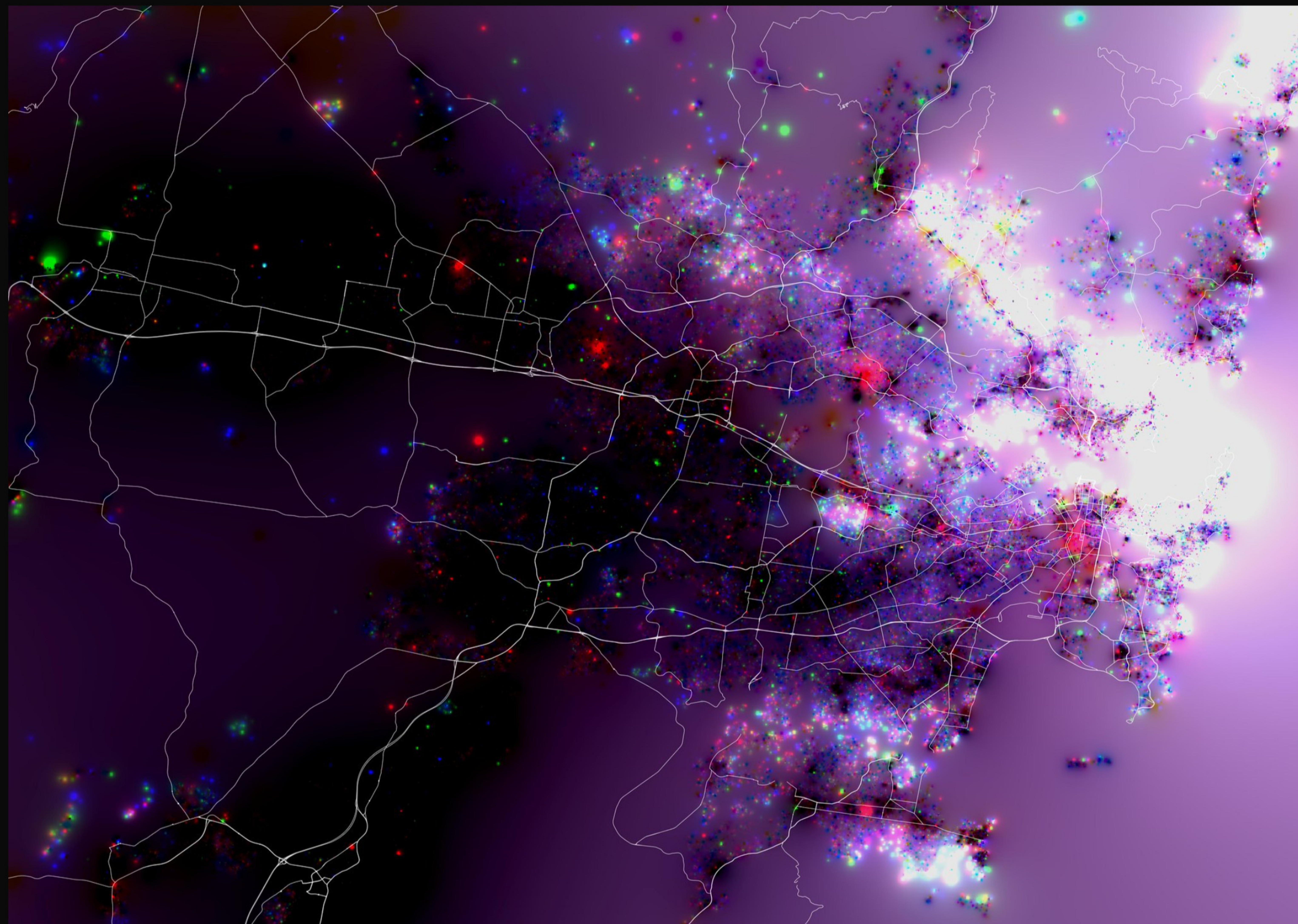
[flickr.com/photos/stevefaeembra/44680360181](https://www.flickr.com/photos/stevefaeembra/44680360181)

SuperTuxKart track speed profiles

For many years I've enjoyed playing SuperTuxKart - a free and open source kart racing game.

Uploaded on September 14, 2018

© All rights reserved



[flickr.com/photos/97267218@N06/13595071563](https://www.flickr.com/photos/97267218@N06/13595071563)

Loaded on April 3, 2014

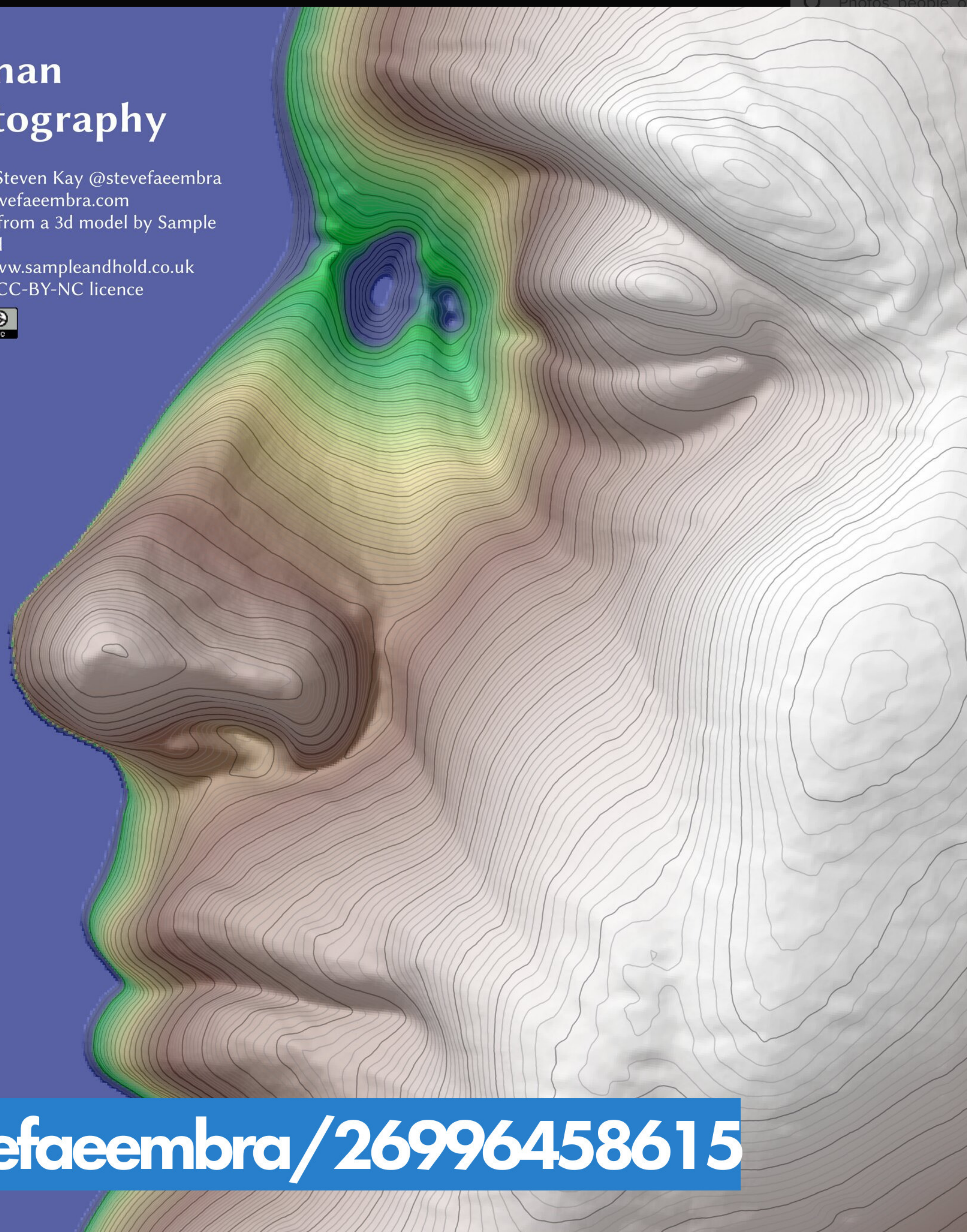
All rights reserved

Constellation

Constant sales price comparison over 3 time periods. Red = expensive in 2001. Green = expensive in 2006 and Blue =

Human Cartography

map by Steven Kay @stevefaembra
www.stevefaembra.com
Derived from a 3d model by Sample and Hold
<http://www.sampleandhold.co.uk>
under a CC-BY-NC licence



[flickr.com/photos/stevefaembra/26996458615](https://www.flickr.com/photos/stevefaembra/26996458615)

Bien appetit

