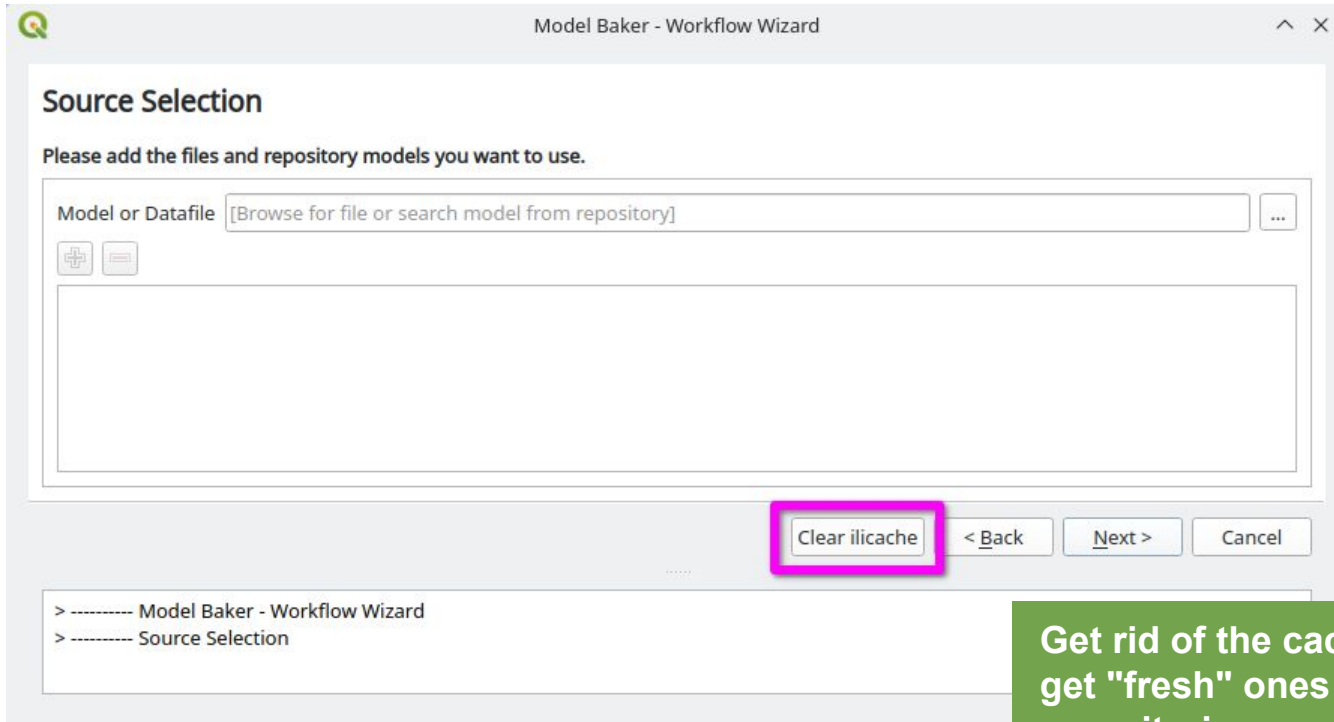


News QGIS Model Baker

Dave Signer (@signedav) | OPENGIS.ch Open-Source GeoNinjas | david@opengis.ch

QGIS / Model Baker Anwendertreffen - 11. Juni 2024





Get rid of the cached models and get "fresh" ones from the repositories



Layer strategy for extended models

Layers

- ✓ Strasse
- ✓ Gebaeude
- ✓ Gebaeude
- ✓ Gebaeude
- ✓ Gebaeude
- ▼ tables
 - Gebaeude_StadtFirma
 - BesitzerIn
 - Firma
 - Firma
- system

Old way
super
confusing

Layers

- ✓ Strasse
- ✓ Gewerbe.Gebaeude
- ✓ Freizeit.Gebaeude
- ▼ tables
 - Gebaeude_StadtFirma
 - BesitzerIn
 - Firma
- system

Layers

- ✓ Strasse
- ✓ Gewerbe.Gebaeude
- ✓ Freizeit.Gebaeude
- ▼ tables
 - Gebaeude_StadtFirma
 - BesitzerIn
 - Staedtisches_Gewerbe_V1.Firmen.Firma
- system
- base layers
 - Kantonale_Ortsplanung_V1_1.Konstruktionen.Gebaeude
 - Ortsplanung_V1_1.Konstruktionen.Gebaeude
- base tables
 - Gewerbe_V1.Firmen.Firma

Layers

- ✓ Strasse
- ✓ Gewerbe.Gebaeude
- ✓ Freizeit.Gebaeude
- ✓ Kantonale_Ortsplanung_V1_1.Konstruktionen.Gebaeude
- ✓ Ortsplanung_V1_1.Konstruktionen.Gebaeude
- ▼ tables
 - Gebaeude_StadtFirma
 - BesitzerIn
 - Staedtisches_Gewerbe_V1.Firmen.Firma
 - Gewerbe_V1.Firmen.Firma
- system

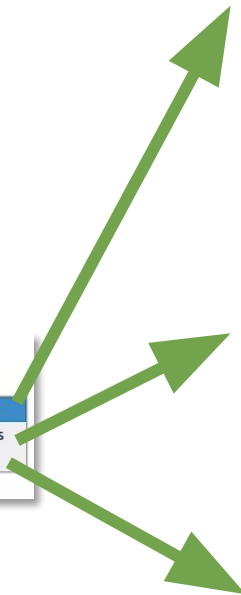
Generate a QGIS Project

Generate a QGIS Project from an existing database.
Project optimization strategy concerning inheritances

0%

- Hide unused base class layers
- Group unused base class layers
- No optimization

New option at generating
project





Export the data in the model you want to

Data export configuration

Select the file you want to export to and the models and datasets from the database

XTF File

Models

Select all models

- Staedtisches_Gewerbe_V1
- Gewerbe_V1
- Ortsplanung_V1_1
- Kantonale_Ortsplanung_V1_1
- Staedtische_Ortsplanung_V1_1**
- Infrastruktur_V1

Export the data in a model other than the one where it is stored

- Staedtisches_Gewerbe_V1
- Gewerbe_V1
- Ortsplanung_V1_1**
- Kantonale_Ortsplanung_V1_1
- Staedtische_Ortsplanung_V1_1
- Infrastruktur_V1

Staedtische_Ortsplanung_V1_1
is an extension of
Kantonale_Ortsplanung_V1_1,
Staedtisches_Gewerbe_V1

Documentation at <https://modelbaker.ch>

Got curious about extended models?
See <https://www.opengis.ch/de/2023/10/31/erweiterte-interlis-modelle-in-qgis/>

Select existing schemas with PostgreSQL

Model Baker - Workflow Wizard

Database Configuration

Select an existing database you want to generate a QGIS project from.

Source: PostGIS

PostGIS

Service: None

Host: localhost

Port: 54322

Database: gis

Schema: anotheridtest

SSL Mode: uniuqetest_03
perimeter_lk_zh_test001
perimeter_lk_zh_test001_3d
sia405_lkmap_2015_lv95
oereb_test

User name: planungszonen_test1

Password: kbs_lv95
kbs_test222
kbs_test2222
gewetest001

Convert to configuration

< Back Next > Cancel

> ----- Model Baker - Workflow Wizard
> ----- Source Selection
> ----- Model Baker - Workflow Wizard
> ----- Database Configuration



Managing TID and BID as OID

TID (OID) Manager

Define the default expression values used for the t_ili_tid field in the attribute forms according to the OID definition from the INTERLIS model.

Layer	TID (OID Type)	Default Value Expression	Show
Spielplatz (OIDMadness_V1.Spazz)	INTERLIS.STANDARDROID	0000' lpad(t_id, 8, 0)	<input type="checkbox"/>
Parkplatz (OIDMadness_V1.Business)	INTERLIS.STANDARDROID	0000' lpad(t_id, 8, 0)	<input type="checkbox"/>
Quartier.Gebaeude ...	INTERLIS.UUIDOID	uuid('WithoutBraces')	<input type="checkbox"/>
Fluss (OIDMadness_V1.Natur)	OIDMadness_V1.TypeIDShort	/ uuid('WithoutBraces')	<input type="checkbox"/>
See (OIDMadness_V1.Natur)	OIDMadness_V1.TypeID	/ uuid('WithoutBraces')	<input type="checkbox"/>
Wald (OIDMadness_V1.Natur)	INTERLIS.UUIDOID	uuid('WithoutBraces')	<input type="checkbox"/>
Wiese (OIDMadness_V1.Natur)	INTERLIS.I32OID	123 t_id	<input type="checkbox"/>
Brache (OIDMadness_V1.Natur)	INTERLIS.STANDARDROID	0000' lpad(t_id, 8, 0)	<input type="checkbox"/>
Park (OIDMadness_V1.Natur)		/ uuid('WithoutBraces')	<input type="checkbox"/>
Gartenhaus (OIDMadness_V1.Quartier)		/ uuid('WithoutBraces')	<input type="checkbox"/>
BesitzerIn ...	INTERLIS.ANYOID	/ uuid('WithoutBraces')	<input type="checkbox"/>
Spazz.Gebaeude ...	INTERLIS.I32OID	123 t_id	<input type="checkbox"/>

Reset Values

Set the TID expression value according to model (e.g. UUIDOID, STANDARDROID, etc.)

Model Baker - Workflow Wizard

Create Baskets for Default Dataset

You need baskets of the default dataset (Basaset) to collect new data in the created schema.

If you plan to start with the import of existing data, you can skip this step. To create baskets later on, find the Dataset Manager in the Model Baker Menu.

Create	Topic	BID (OID Type)	BID Value
<input checked="" type="checkbox"/>	Infrastruktur_V1.Strassen		_290eeb11-8642-4075-a6d7-d0c357c3ba7d
<input checked="" type="checkbox"/>	Kantonale_Ortsplanung_V1_1.Konstruktionen		_8ce4d4d6-ecea-48a3-bb49-617008ffdb47
<input type="checkbox"/>	OIDBaseMadness_V1.Konstruktionen	INTERLIS.ANYOID	_e9bea02d-3312-4f32-8215-5ae97b377b28
<input type="checkbox"/>	OIDBaseMadness_V1.Wohnraum	INTERLIS.UUIDOID	
<input checked="" type="checkbox"/>	OIDMadness_V1.Business	INTERLIS.STANDARDROID	chB00000{t_id}
<input checked="" type="checkbox"/>	OIDMadness_V1.Natur		_bfb61b96-1002-4c8f-8c2b-59eb5c18851d
<input checked="" type="checkbox"/>	OIDMadness_V1.Quartier		_5d928b81-177b-4ead-8012-8f7bf0d0fe9b
<input checked="" type="checkbox"/>	OIDMadness_V1.Spazz	INTERLIS.I32OID	{t_id}

0%

Info: ...done
Info: ...done
Interlis model(s) successfully imported into the database!
Create the default dataset Basaset

Set the BID value according to model

Make t_ili_tid available for editing if necessary

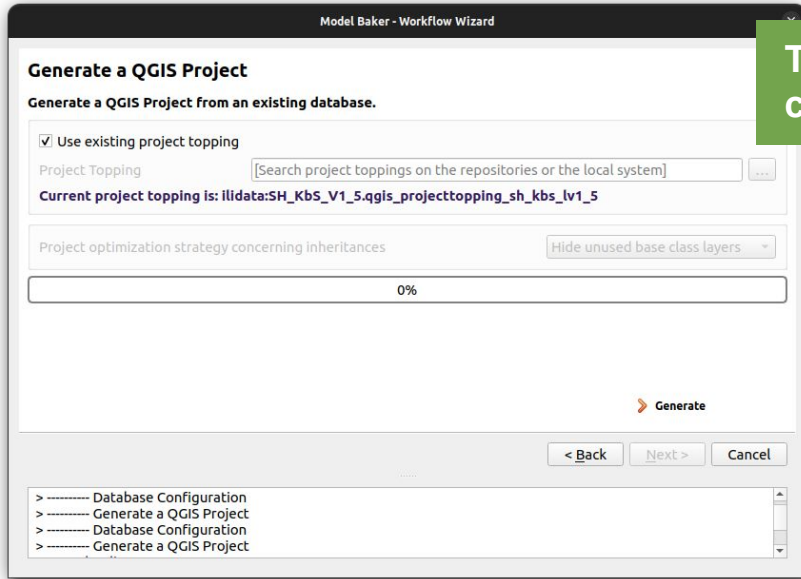
Documentation at <https://modelbaker.ch>

What the f**k are TID and BID and what are they for?

See https://www.opengis.ch/de/2024/01/16/oid-tid-t_ili_tid-tid-model-baker-7-8-nimmmts-easy/

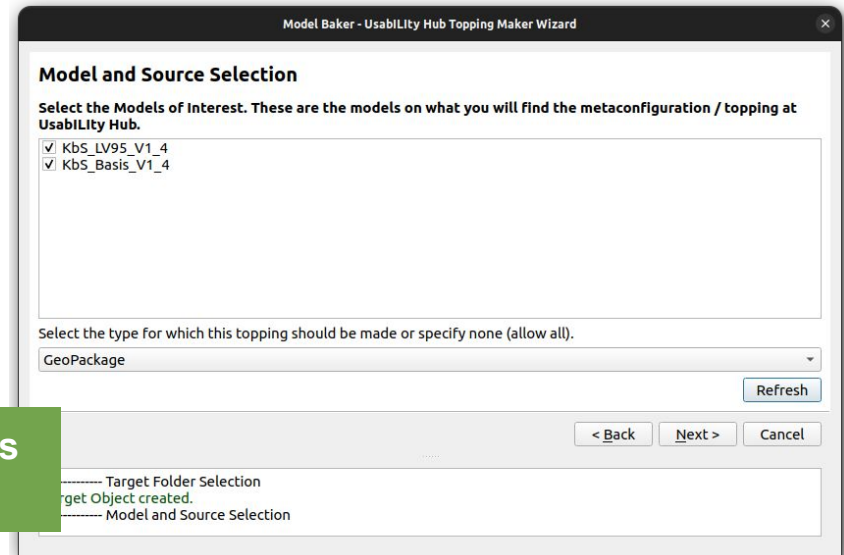


And what about Usability Hub?



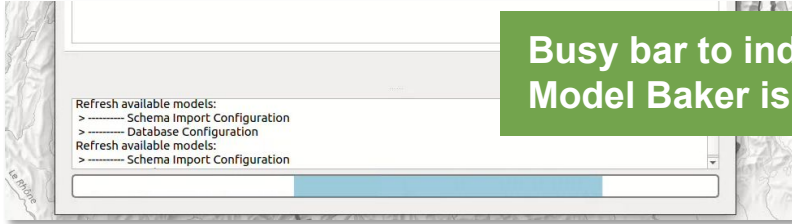
Toppings from Usability Hub can be used on existing schemas

Select at export for which datasources the topping is available





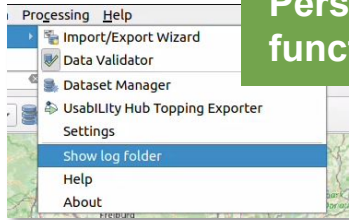
And some more



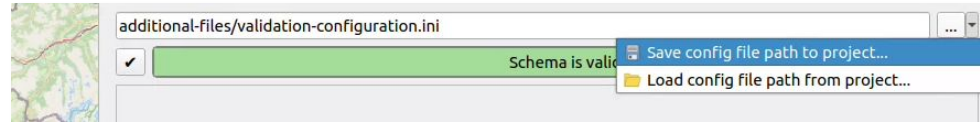
Busy bar to indicate that Model Baker is doing something

Delete before import

	Import File	Delete	Catalogue	Dataset
↑ ↓	Wildruhezonen_Catalogues_V2_1.xml (/home/freddy/...	<input type="checkbox"/>	<input checked="" type="checkbox"/>	---
↑ ↓	wrz_bundesmodell.txf (/home/freddy/interlis_stuff/...	<input checked="" type="checkbox"/>	<input type="checkbox"/>	Baseset ▾



Persistent logging functionality



Save config file path in QGIS project

See all changes at <https://github.com/opengisch/QgisModelBaker/releases>



**Translated
Models**

**Multiple Geometry
Columns on GeoPackage**

Consistency on GUI

**Superpower
Basket Manager**

**Smart1
Optimizations**

**Complete ili2db
Settings in
UsabLLity Hub**

**Hidden / Searchable /
Identifiable Layers in
UsabLLity Hub**



GitHub

<https://github.com/opengisch/QgisModelBaker>



Romedi Filli, romedi.filli@sh.ch
David Signer, david@opengis.ch

